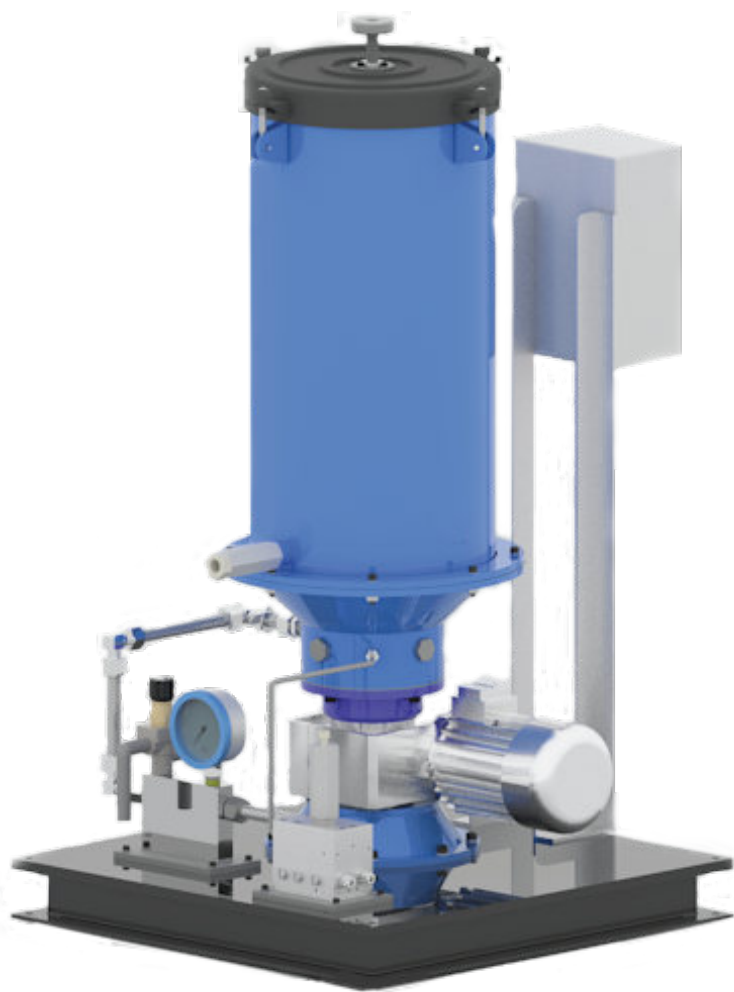


DUOLUBERR 40KG



DUOLUBERR 100KG

RIKKON GROUP OF COMPANIES

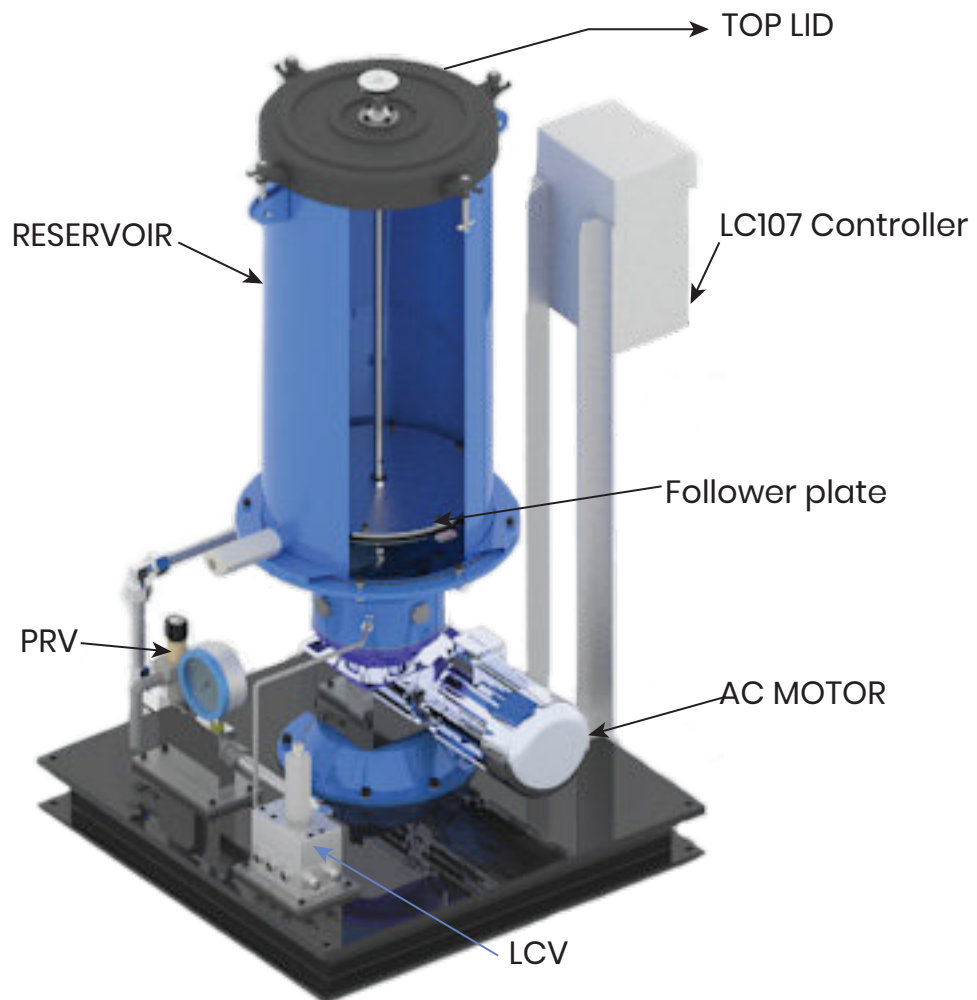
HOW DUOLUBERR WORKS ?

The DUOLUBERR pump operates using a 1.1 KW, 1440 RPM, 440 VAC, 3-phase, 50 Hz motor, which is coupled to a worm gearbox (56 RPM). This setup ensures an uninterrupted supply of grease to the required lubrication points.

The DUOLUBERR delivers a grease output of either 4 or 8 kg/hour to the greasing points. The line pressure is regulated and maintained below 350 bar by setting the Pressure Relief Valve (PRV) at 350 bar. A key advantage of DUOLUBERR is its ability to pump a high volume of grease at elevated pressures, making it suitable for long-distance greasing of up to 300 meters.

The system also includes the LCP-107 controller, which facilitates efficient lubrication of machines or greasing points by automatically turning the pump on and off as needed. This feature minimizes grease wastage and ensures the lubrication points receive the appropriate amount of grease at the correct intervals.

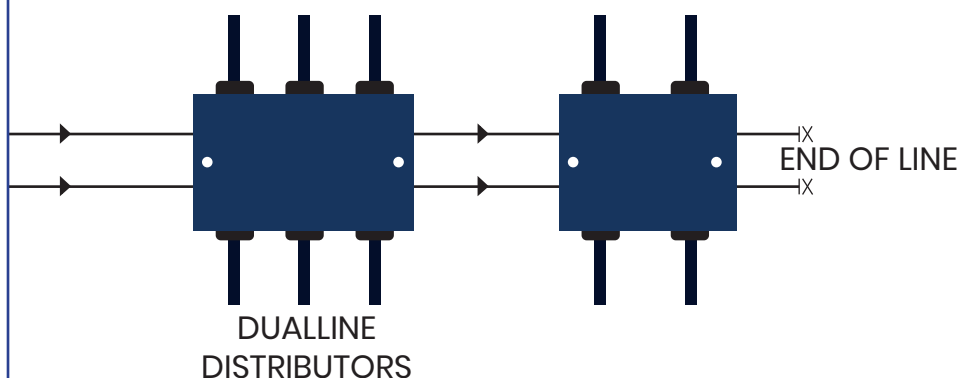
Additionally, a Line Changeover Valve (LCV) is integrated into the system. This self-operated valve, using an internal switching mechanism, alternates the flow of lubricant to the greasing points at either end of the pump through a pressure-reach switching method.



GENERAL LAYOUT FOR DUOLUBERR



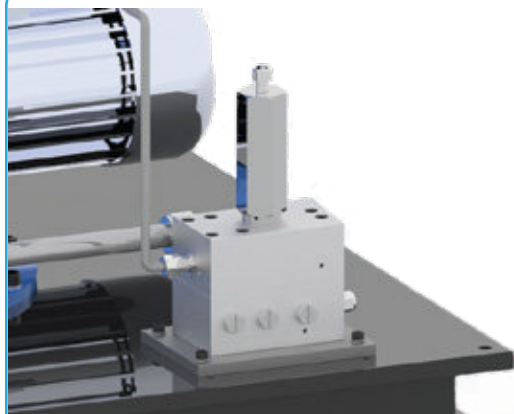
DUOLUBERR PUMPS



TECHNICAL SPECIFICATION

AC motor	3 phase , 1440 RPM , 440 VAC geared AC motor – 56 RPM
Output	4 KG / hr 8 KG/hr
Reservoir Capacity	40 KG 100KG
Optional accessories	LCP – 107 controller
PRV	set @ 350 Bar
Max grease grade	NLGI 2
O/P line size	20mm OD carbon steel tubes

LCV (Line Changeover Valve)



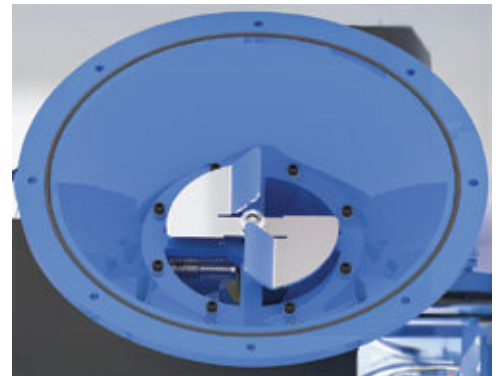
Material	Carbon Steel
Max. Graese Grade	NLGI 2
Max. Working Pessure	400Bar
Return Line	1/4" BSP
Inlet Connection	3/8" BSP
Outlet Connection	1/4" BSP – Dual line
Change Over pressure	50 – 350 Bar

APPLICATIONS



About Pumping Unit

The pumping unit assembled with the DUOLUBERR has an ability to deliver the lubricants to the greasing point at the rate of 4 KG per hour. This make the sufficient lubrication to the greasing point and endures the durability of the machines.



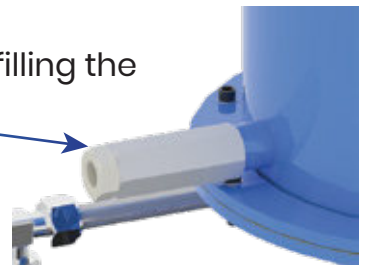
LCP – 107 CONTROLLER



DUOLUBERR's efficiency is improved and maintained with LCP-107 Controller. The LCP- 107 controller is electrically operated to control the DUOLUBERR pump. With the controller signals pump operates in more simple , reliable way to use optimum resource and saves the wastage of grease and cost.

- 💧 Data Logging option is available - Optional
- 💧 Low Level indication available
- 💧 Error message on system malfunctioning

DUOLUBERR is provided with special inlet charger which helps in refilling the reservoir with “ Clean Grease ”
Filter – 200 microns



contact us



📍 No: 203, Nageswara Rao Road, 2nd extn.,
Athipet, Ambattur, Chennai - 600 058
Tamil Nadu, INDIA

✉ info@rikkongroup.com / sales@rikkongroup.com

🌐 www.rikkongroup.com / www.luberr.in



contact person :